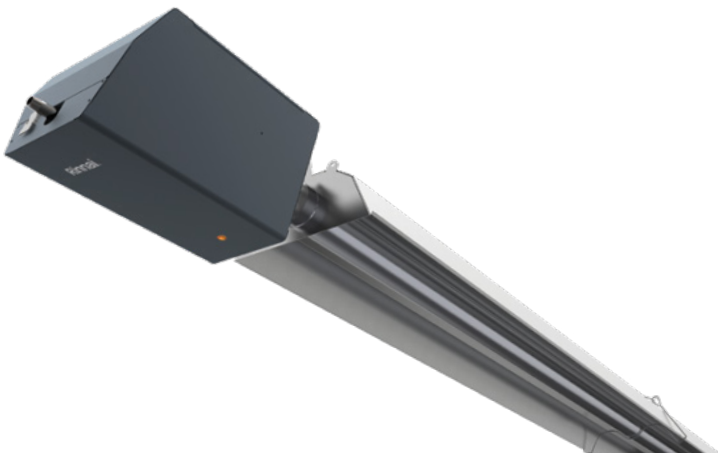


Rinnai®



HE+ Infrared Radiant Tube Heater

Built with an ECM Blower



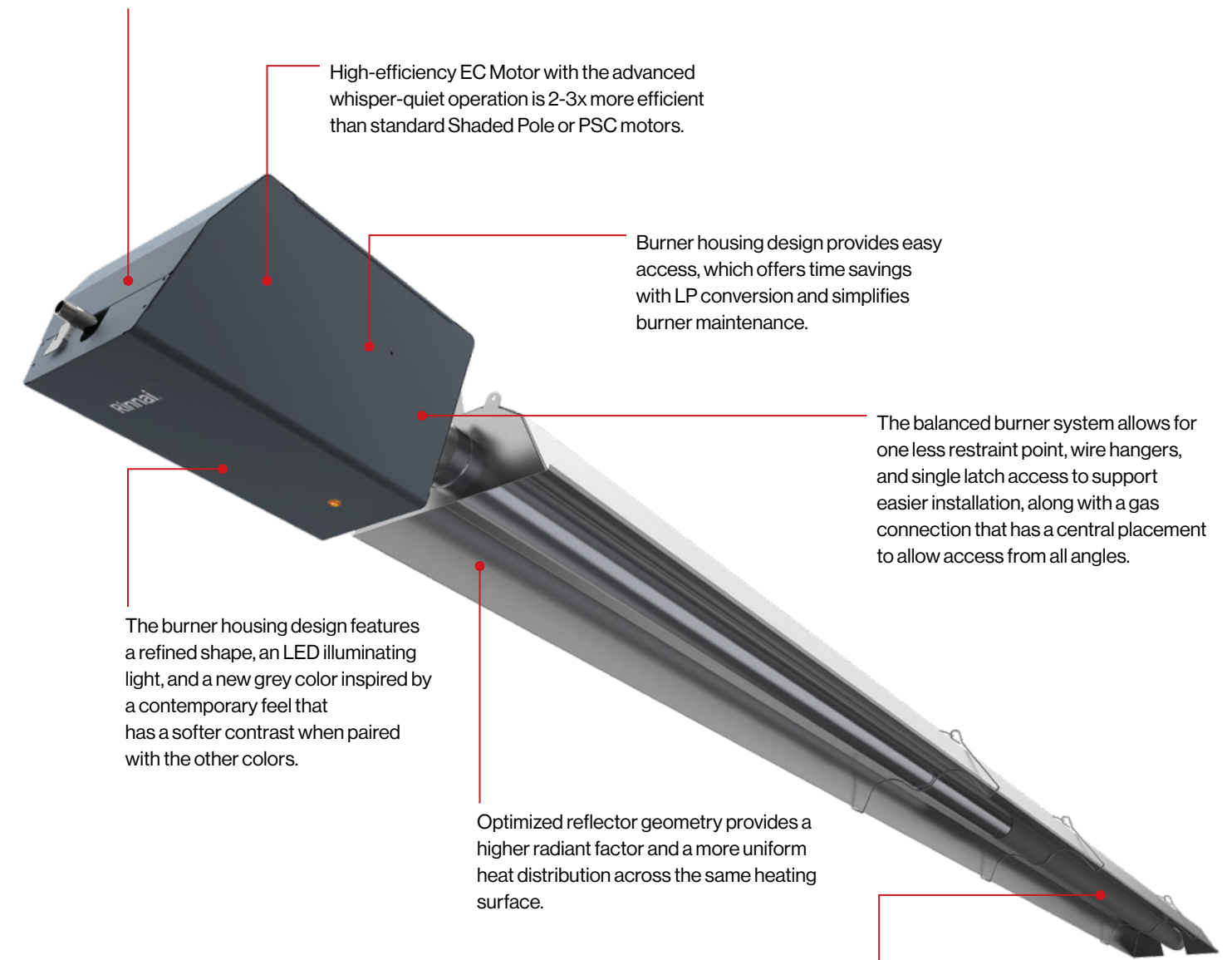


The latest advancement in low-intensity infrared radiant heating – built with EC Motor [ECM] technology, advanced whisper-quiet operation, and true modulation models.

Rinnai brings you the next generation of infrared tube heaters

Available in NG* modulating, single-stage and two-stage models

True modulation adjustment of both air and gas allows precise control of the real-time response to actual heat demand.



High-efficiency EC Motor with the advanced whisper-quiet operation is 2-3x more efficient than standard Shaded Pole or PSC motors.

Burner housing design provides easy access, which offers time savings with LP conversion and simplifies burner maintenance.

The balanced burner system allows for one less restraint point, wire hangers, and single latch access to support easier installation, along with a gas connection that has a central placement to allow access from all angles.

The burner housing design features a refined shape, an LED illuminating light, and a new grey color inspired by a contemporary feel that has a softer contrast when paired with the other colors.

Optimized reflector geometry provides a higher radiant factor and a more uniform heat distribution across the same heating surface.

Emissive coated radiant tubes are designed to improve the thermal efficiency of infrared heaters.

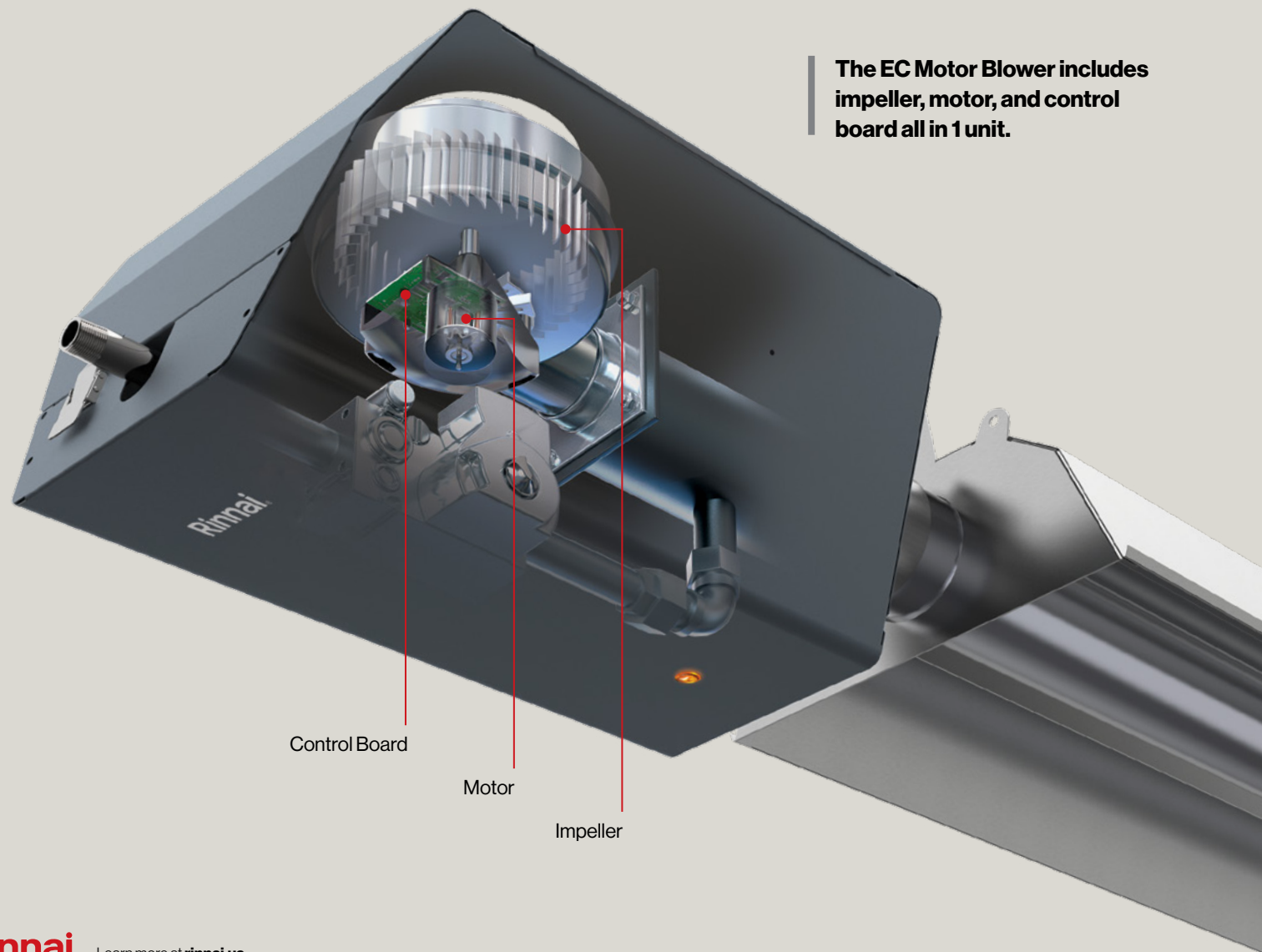
* Convertible to LP

Experience Rinnai HE+

Optimize your building with the latest gas-fired infrared technology

Rinnai uses EC Motors across the complete HE+ product line of single-stage, two-stage, and modulating infrared tube heaters.

- Electronically Commutated Motor [ECM]
- Provides +85% radiant efficiencies throughout a full range of operation, in addition to whisper-quiet operation.
- An EC Motor is 2x more efficient than a PSC motor [Permanent Split Capacitor] and 3x more efficient than a Shaded Pole AC motor which is commonly used for infrared tube heaters.
- A constant torque EC Motor leads into more robust and stable combustion through the heaters' entire range of operation and external pressure changes.



ECM Technology in HE+ True Modulating Models

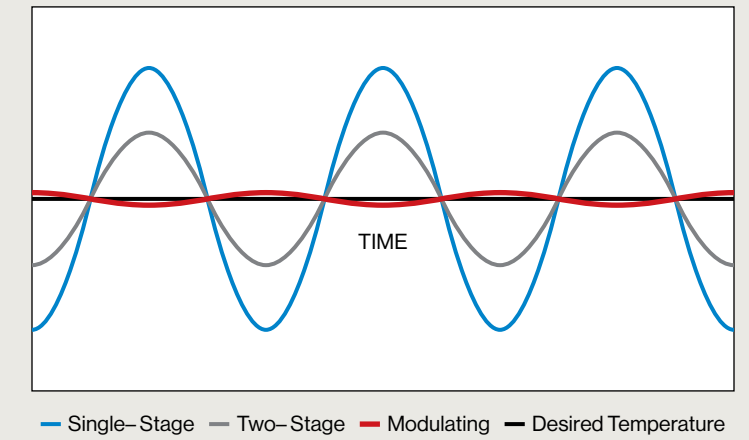
- The custom control board provides real-time optimization of fuel to air ratio for the perfect combustion through communicating with EC Motor and modulating gas valve.
- Eliminates temperature swings by pairing ECM technology with gas valves.
- The heating system's service life significantly increases as frequent ON/OFF cycles [cold starts] are reduced.
- Adapt the heat demand in the space to maintain a consistent comfort level by truly modulating the heat.

Optimized Reflector

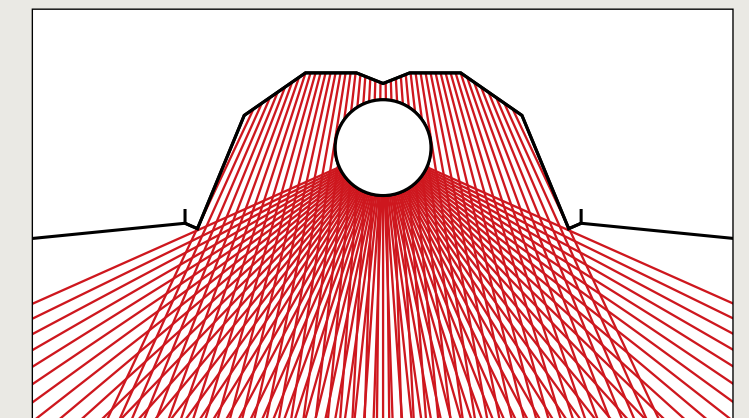
- The new reflector geometry provides increased efficiency over conventional reflectors and maximizes the heat distribution throughout the entire radiant area.
- A reduced air gap on the top of the tube heater results in less convection heat loss.
- Providing a more uniform heat distribution across the same heating surface.



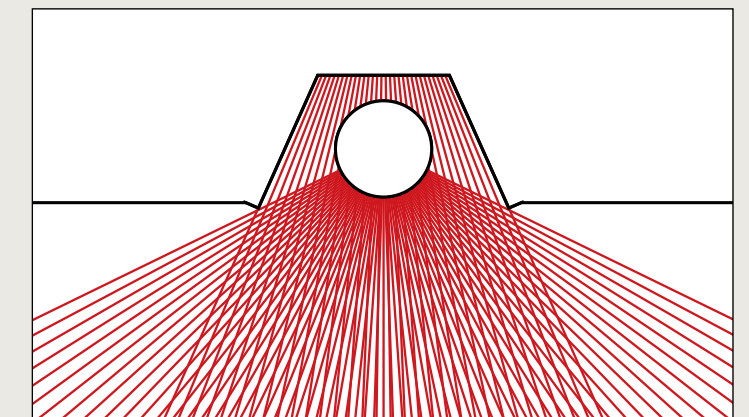
TEMPERATURE SWING



NEW REFLECTOR

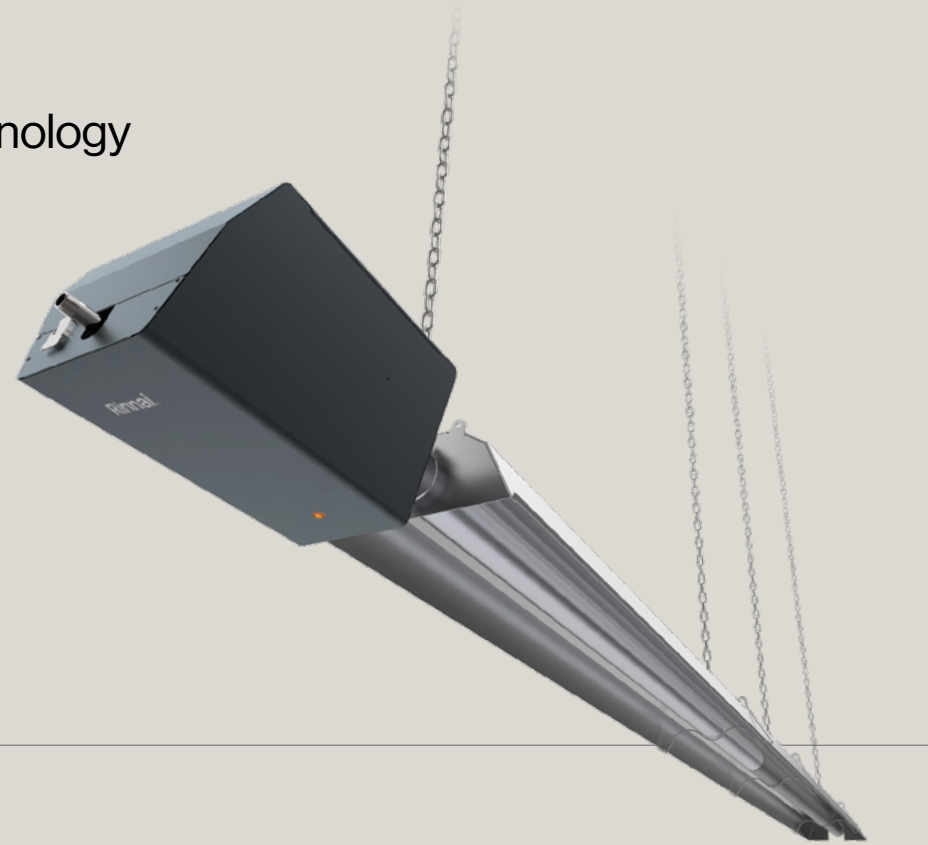


CONVENTIONAL REFLECTOR



Rinnai HE+

Experience the newest technology in low-intensity infrared radiant tube heaters



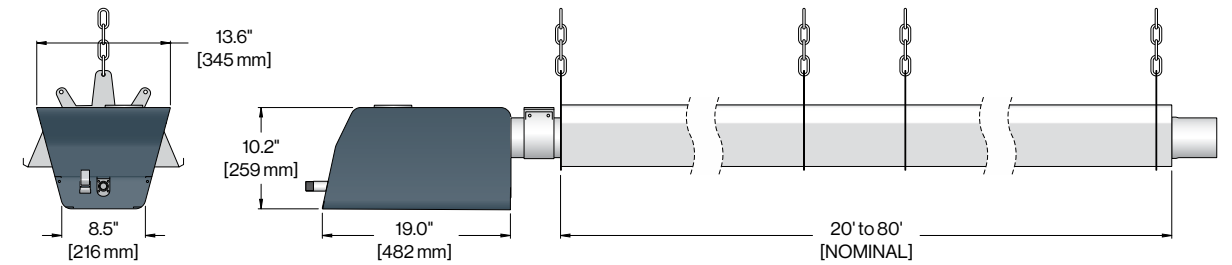
Features:

- Models range from 50,000 to 250,000 BTUHs, 20 – 80 ft length systems, and highest mounting options up to 50 ft.
- Available in NG single-stage, two-stage, and modulating HE+ models. Field conversion kit for LP
- Factory-installed turbulators and mounted ignitor.
- The burner housing design features a refined shape, new contemporary color and LED illuminating light.
- High-efficiency EC Motor technology with 85% motor efficiency and advanced whisper-quiet operation.
- True modulation adjustment of both air and gas allows precise control of the real-time response to the demand.
- Optimized reflector geometry provides increased efficiency over conventional reflectors and maximizes heat distribution throughout the entire radiant area.
- Differential pressure switch design allows for variations in the ambient pressure.
- Emissive coated radiant tubes significantly improve the thermal efficiency of infrared heaters.
- Improved serviceability with screwless swing-down cabinet service access paired with a clamshell design and access hatch to the burner cup, which provides access to all components.
- Power cord with plug and flexible gas connector included.
- Optional 24V thermostats include Rinnai Tru Temp, Digital, ZonePRO Modulating, or Relay Multiple Heaters.
- Industry-leading warranty of 3 years on all components and 10 years for radiating tubes/burner cup.
- Perfect for commercial, industrial, warehouse, and distribution center applications.
- C-UL-US certified compliance with both Canadian and USA requirements.



DIMENSIONS AND SPECIFICATIONS

With a wide range of sizes and models available, choose the ideal HE+ to use in your commercial space.

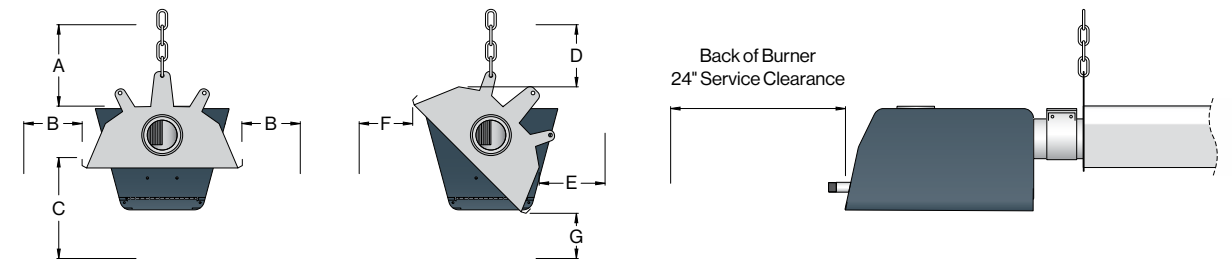


Tube Lengths

- Single-stage
- Two-stage
- Modulating

MODEL	20'	30'	40'	50'	60'	70'	80'
RHEP 250					•••	•••	•
RHEP 225					••	••	•
RHEP 205				•••	•••	•	
RHEP 180				••	••	•	
RHEP 155			•••	•••	•		
RHEP 130		••	••	•			
RHEP 115		•••	•••	•			
RHEP 80	•••	•••	•				
RHEP 65	••	••	•				
RHEP 50	••	••	•				

CLEARANCE TO COMBUSTIBLES



MODEL	SUSPENDED HORIZONTALLY			SUSPENDED AT AN ANGLE UP TO 45°			
	A	B	C	D	E	F	G
RHEP 250	12"	44"	95"	14"	6"	78"	82"
RHEP 225	12"	42"	92"	12"	6"	78"	78"
RHEP 205	8"	40"	88"	10"	6"	78"	74"
RHEP 180	7"	36"	84"	8"	4"	76"	72"
RHEP 155	6"	30"	80"	7"	4"	74"	66"
RHEP 130	6"	28"	78"	7"	3"	72"	64"
RHEP 115	5"	26"	74"	5"	3"	70"	62"
RHEP 80	5"	24"	62"	5"	3"	60"	54"
RHEP 65	4"	22"	52"	4"	3"	50"	48"
RHEP 50	4"	20"	42"	4"	3"	44"	40"

PART NO. DETAIL

SERIES: RHEP

BTU X 1000: XX

LENGTH (FT): XX

GAS TYPE: N

Gain a performance edge, with the latest advancements in commercial and industrial infrared radiant heating.

Experience cutting edge design and comfort

Rinnai now offers low- and high-intensity gas infrared heating systems for commercial/industrial applications that are of the highest quality and performance standards. See our complete line of Heating and Water Heating solutions at rinnai.us/commercial.



Creating a healthier way of living[®]

Learn more about Rinnai high-performance Tankless Water Heaters, Hybrid Water Heating Systems, Boilers, Vent-Free Fan Convectors, EnergySaver[®] Direct Vent Wall Furnaces and Hydronic Air Handlers.

rinnai.us

Rinnai[®]

Rinnai America Corporation

103 International Drive | Peachtree City, GA 30269
1-800-621-9419 | rinnai.us

PROUD SPONSOR



FOLDS of HONOR